



PRODUCT CATALOGUE 2012





Please print on 100% recycled paper

Content

Professional Cookware Ranges 3

ROTTERDAM	Hard anodized	5
SAN FRANCISCO	Hard anodized induction	7
	Black cast iron induction	9
	Hard anodized	11

Cookware Ranges 13

ORLANDO	Black cast iron induction	15
	White cast iron induction	17
	Blue cast iron induction	19
DUBAI	Black aluminium induction	21
	White aluminium induction	23
STOCKHOLM	Multilayer stainless steel induction	25
	Hard anodized induction	27
	Black aluminium induction	29
LONDON	Black aluminium	31
	White aluminium	33
KYOTO	Black aluminium induction	35
	White aluminium induction	37
	Black aluminium	39
HELSINKI	Black aluminium induction	41
BARCELONA	Black aluminium induction	43
	Multilayer stainless steel	45
PARIS	Hard anodized	47
NEW YORK	Stainless steel induction	49
	Hard anodized	51
	Black aluminium	53
KYOTO bis	Black aluminium	55
MIAMI	Stainless steel induction	57
LIMA	Stainless steel induction	59
	Hard anodized	61
	Black aluminium	63
RIO	Black aluminium	65

RIO +	Black aluminium	67
SOFIA	Black aluminium induction	69
VENICE	Thermolon™ exterior induction	71
EGG EXPERT	Green aluminium	73

Essentials Collection 75

ESSENTIALS	Groovy Grill black aluminium	76
	Hot Pot black aluminium	78
	Wonder Wok black aluminium induction	80
	Twin Pan Set black/white aluminium	82
	Tree trivet	84

Ovenware 87

DUBAI	Aluminized steel	88
-------	------------------	----

Electrical Appliances 91

Electrical	Steak King Grill	92
	Rice Expert Multi Cooker	94
	Induction Cooker	96

Accessories 99

BAMBOO	100
TEXTILES	100
INSERTS	101
LIDS	101



Why GreenPan™?

GreenPan™ is an international company with headquarters in Belgium.

GreenPan™ develops and manufactures qualitative household products based on 3 core principles.


HEALTH


ENVIRONMENT


CONVENIENCE



"If we don't show our children the road to sustainability, nothing will change. Don't expect that the next generation will clean up our mess, we have to start ourselves right here, right now."

GreenPan™ is on a mission to help support the global challenges of living in our modern society, by bringing **convenience** and **sustainability** to our products.

All over the world people have started to realize that global warming, pollution and the destruction of the environment are major issues for the 21st century.

Unfortunately, with some decisions we have to make we don't always have choices.

We, at GreenPan™ are committed to provide you with choices by offering you products that really will make a difference for your carbon footprint. You don't have to change the way you live. We have changed the way products are made.

The Original
GREEN PAN™



Professional cookware ranges

Rotterdam



hard anodized



Please print on 100% recycled paper

innovative technology

Rotterdam*

hard anodized

Can be used on following stoves
Gas / Electric / Ceramic / Halogen

THE BODY

Material Aluminium 3003 - 4 mm
 Shape Slanted shape with pouring rim
 Base Single base
 Coating interior Thermolon™ Rocks Professional

THE HANDLES

Long handle Stainless steel with removable silicone cover
 Assembly Riveted
 Finish Rough

THE PACKAGING

Individual GreenPan™ sleeve
 GreenPan™ care and use and GreenPan™ warranty card
 Master carton Brown master carton

POTS AND PANS AVAILABLE

Open non-stick frypan Ø 20 cm/ Ø 26 cm/ Ø 28 cm
 Ø 30 cm/ Ø 32 cm/ Ø 34 cm
 Open non-stick chef's pan Ø 20 cm
 Open non-stick skillet Ø 24 cm/ Ø 28 cm
 Open non-stick wok Ø 30 cm
 Non-stick square grill pan 28,6 x 28,6 cm



Protocol 1998:

Global international agreement aimed at protecting human health and the environment from the potentially harmful effects of certain hazardous chemicals, including some pesticides and industrial chemicals. The Convention works by promoting shared responsibilities and cooperative efforts associated with the international trade of these chemicals and by facilitating the exchange of information about chemicals that have been banned or severely restricted



label



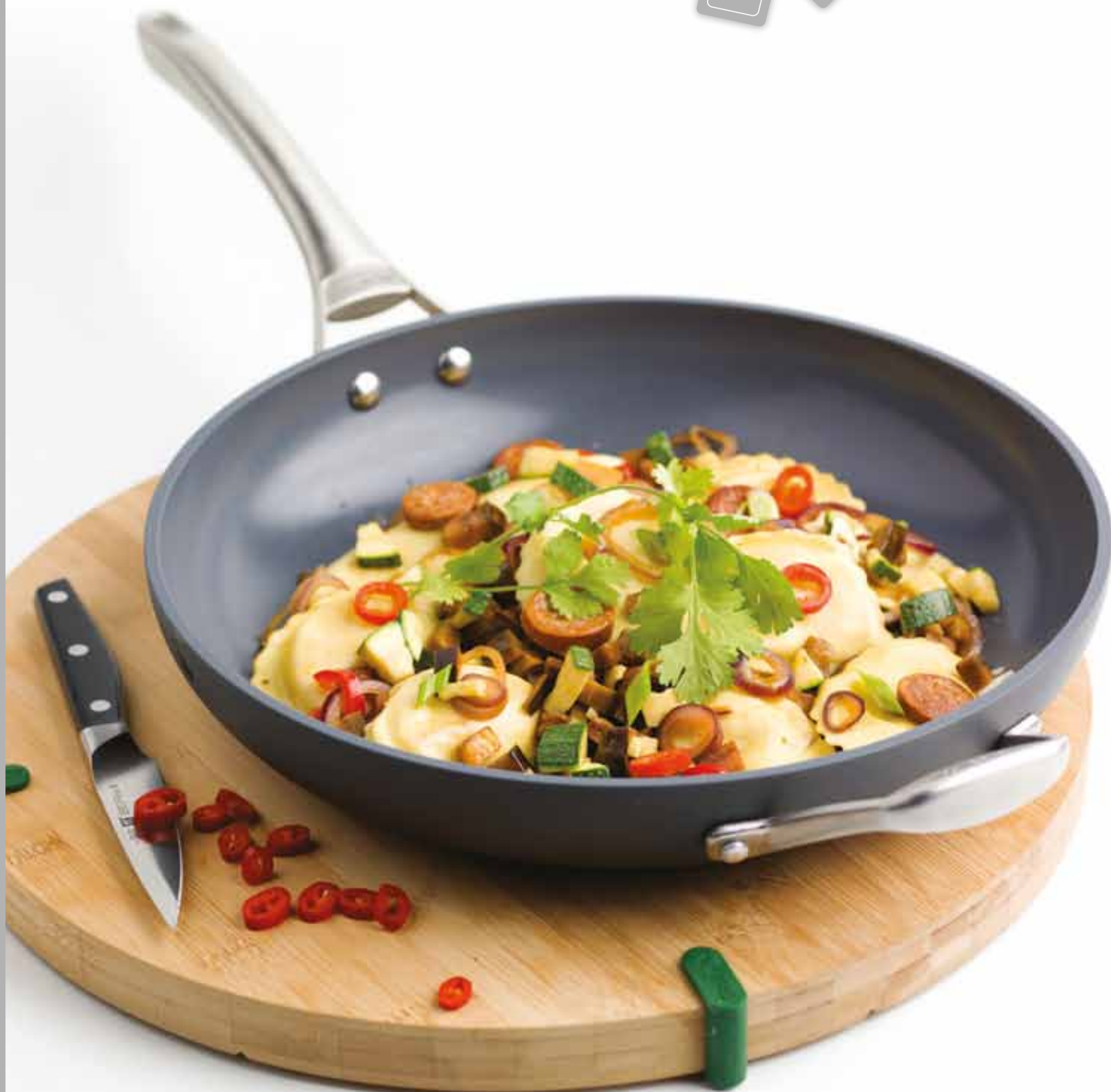
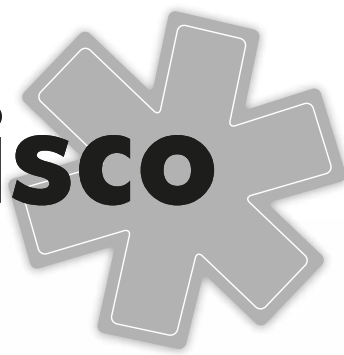
vw 01



vw 02



San Francisco



hard anodized induction



Please print on 100% recycled paper

innovative technology

San Francisco*

hard anodized
induction

Can be used on following stoves

Gas / Electric / Ceramic / Halogen / Induction

THE BODY

Material
Shape

Aluminium 3003 - Variable in walls
Straight step base with cut neck

Base

Forged frypans cut neck
Impact bonded extra thick forged base
Stainless steel 430 protector
Thermolon™ Rocks Professional

Coating interior

THE HANDLES

Long handle
Side handle
Lid handle
Assembly
Finish

Hollow cast stainless steel
Hollow cast stainless steel
Hollow cast stainless steel
Riveted
Satin

THE PACKAGING

Individual

GreenPan™ blister, front card & sleeve
GreenPan™ box:
Covered items and open saucepans
GreenPan™ care and use and
GreenPan™ warranty card
Brown master carton

Master carton

POTS AND PANS AVAILABLE

Open non-stick frypan

Ø 20 cm
Ø 24 cm
Ø 26 cm
Ø 28 cm
Ø 30 cm

* Protocol 2008:

Framework for cities, towns and villages to enhance the health and quality of life of their inhabitants and maintain the ecosystems on which they depend



label



vw 01



vw 02



San Francisco



Black cast iron induction



Please print on 100% recycled paper

innovative technology

San Francisco*



black cast iron
induction

Can be used on following stoves

Gas / Electric / Ceramic / Halogen / Induction

THE BODY

Material	Cast iron
Base	Star base
Coating exterior	Black enamel

THE LID

Material	Stainless steel 0.7 mm
Finish	Satin

THE PACKAGING

Individual	GreenPan™ gift box
	GreenPan™ hang tag
	GreenPan™ Care & Use + Warranty
Master carton	Brown master carton

ITEMS AVAILABLE

Cast iron grill	Ø 30 cm
With wire rack	
With high dome stainless steel lid	

* Protocol 2008:

Framework for cities, towns and villages to enhance the health and quality of life of their inhabitants and maintain the ecosystems on which they depend



vw 01



vw 02

San Francisco



hard anodized



Please print on 100% recycled paper

innovative technology

San Francisco*

hard anodized

Can be used on following stoves

Gas / Electric / Ceramic / Halogen

THE BODY

Material

Aluminium 3003 - Variable in walls

Shape

Straight step base with cut neck

Forged frypans cut neck

Base

Step base

Coating interior

Thermolon™ Rocks Professional

THE HANDLES

Long handle

Hollow cast stainless steel

Side handle

Hollow cast stainless steel

Lid handle

Hollow cast stainless steel

Assembly

Riveted

Finish

Satin

THE LID

Material

Stainless steel 0.8 mm

Finish

Satin

THE PACKAGING

Individual

GreenPan™ sleeve

GreenPan™ box:

Covered items and Open saucepan

GreenPan™ care and use and

GreenPan™ warranty card

Brown master carton

Master carton

POTS AND PANS AVAILABLE

Open non-stick frypan

Ø 20 cm/ Ø 24 cm/ Ø 26 cm

Ø 28 cm/ Ø 30 cm

Open non-stick frypan with helper handle

Ø 32 cm

Open non-stick saucepan with 2 spouts

Ø 14 cm

Covered non-stick saucepan

Ø 18 cm

Open or covered non-stick saucepan

Ø 20 cm

Covered non-stick casserole

Ø 24 cm (5,0 L)

Covered non-stick stockpot

Ø 24 cm (7,5 L)

Covered non-stick skillet with 2 side handles

Ø 24 cm

Covered non-stick skillet

Ø 26 cm

Covered non-stick wok with helper handle

Ø 32 cm

and high dome stainless steel lid

Open non-stick oval fish pan

33 x 23 cm

Open non-stick square grill

26 x 26 cm

Open non-stick pancake pan

Ø 28 cm

Non-stick Low Square grill

Ø 28 cm

Covered non-stick Multi Cooker set

Ø 24 cm

Non-stick Rectangular Roaster

40,6 x 33 x 7,6 cm

Non-stick Double Bumer grill

45,7 x 27,9 x 3,8 cm



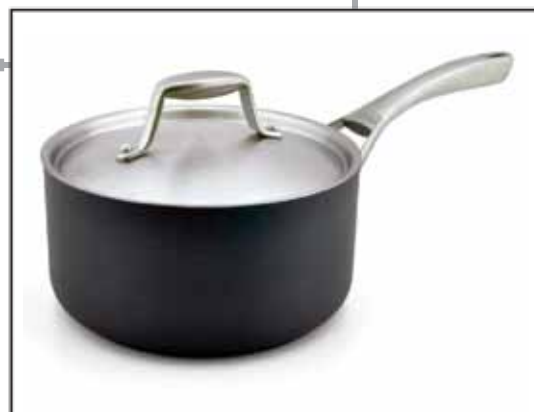
* Protocol 2008:

Framework for cities, towns and villages to enhance the health and quality of life of their inhabitants and maintain the ecosystems on which they depend

label



vw 01



vw 02



Why GreenPan™?

GreenPan™ is an international company with headquarters in Belgium.

GreenPan™ develops and manufactures qualitative household products based on 3 core principles.


HEALTH


ENVIRONMENT


CONVENIENCE



"If we don't show our children the road to sustainability, nothing will change. Don't expect that the next generation will clean up our mess, we have to start ourselves right here, right now."

GreenPan™ is on a mission to help support the global challenges of living in our modern society, by bringing **convenience** and **sustainability** to our products.

All over the world people have started to realize that global warming, pollution and the destruction of the environment are major issues for the 21st century.

Unfortunately, with some decisions we have to make we don't always have choices.

We, at GreenPan™ are committed to provide you with choices by offering you products that really will make a difference for your carbon footprint. You don't have to change the way you live. We have changed the way products are made.

The Original
GREEN PAN™



Cookware ranges

Orlando



Black cast iron induction



Please print on 100% recycled paper

innovative technology

Orlando*



black cast iron
induction

Can be used on following stoves

Gas / Electric / Ceramic / Halogen / Induction

THE BODY

Material	Cast iron
Base	Star base
Coating exterior	Enamel black

THE LID

Material	Cast iron
Finish	Enamel black

THE PACKAGING

Individual	GreenPan™ gift box
	GreenPan™ Care & Use + Warranty
	GreenPan™ product cards
Master carton	Brown master carton

ITEMS AVAILABLE

Open round frypan	Ø 26 cm/ Ø 30 cm
Open square grill pan	Ø 26 cm/ Ø 30 cm
Covered round dutch oven	Ø 24 cm (4.25 L)/ Ø 28 cm (5.2 L)

* **Protocol
May 11, 2011:**
2nd International
Conference on Disaster Management
and Human Health



VW 01



VW 02

Orlando



White cast iron induction



Please print on 100% recycled paper

innovative technology

Orlando*

white cast iron
induction

Can be used on following stoves

Gas / Electric / Ceramic / Halogen / Induction

THE BODY

Material	Cast iron
Base	Star base
Coating exterior	Enamel white

THE LID

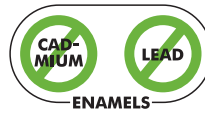
Material	Cast iron
Finish	Enamel white

THE PACKAGING

Individual	GreenPan™ gift box
	GreenPan™ Care & Use + Warranty
	GreenPan™ product cards
Master carton	Brown master carton

ITEMS AVAILABLE

Open round frypan	Ø 26 cm/ Ø 30 cm
Open square grill pan	Ø 26 cm/ Ø 30 cm
Covered round dutch ove	Ø 24 cm (4.25 L)/ Ø 28 cm (5.2 L)



* **Protocol**
May 11, 2011:
2nd International
Conference on Disaster Management
and Human Health



vw 01



vw 02

Orlando



Blue cast iron induction



Please print on 100% recycled paper

innovative technology

Orlando*

blue cast iron
induction

Can be used on following stoves

Gas / Electric / Ceramic / Halogen / Induction

THE BODY

Material	Cast iron
Base	Star base
Coating exterior	Enamel blue

THE LID

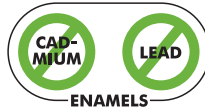
Material	Cast iron
Finish	Enamel blue

THE PACKAGING

Individual	GreenPan™ gift box
	GreenPan™ Care & Use + Warranty
	GreenPan™ product cards
Master carton	Brown master carton

ITEMS AVAILABLE

Open round frypan	Ø 26 cm / Ø 30 cm
Open square grill pan	Ø 26 cm / Ø 30 cm
Covered round dutch oven	Ø 24 cm (4.25 L) / Ø 28 cm (5.2 L)



* **Protocol**
May 11, 2011:
2nd International
Conference on Disaster Management
and Human Health

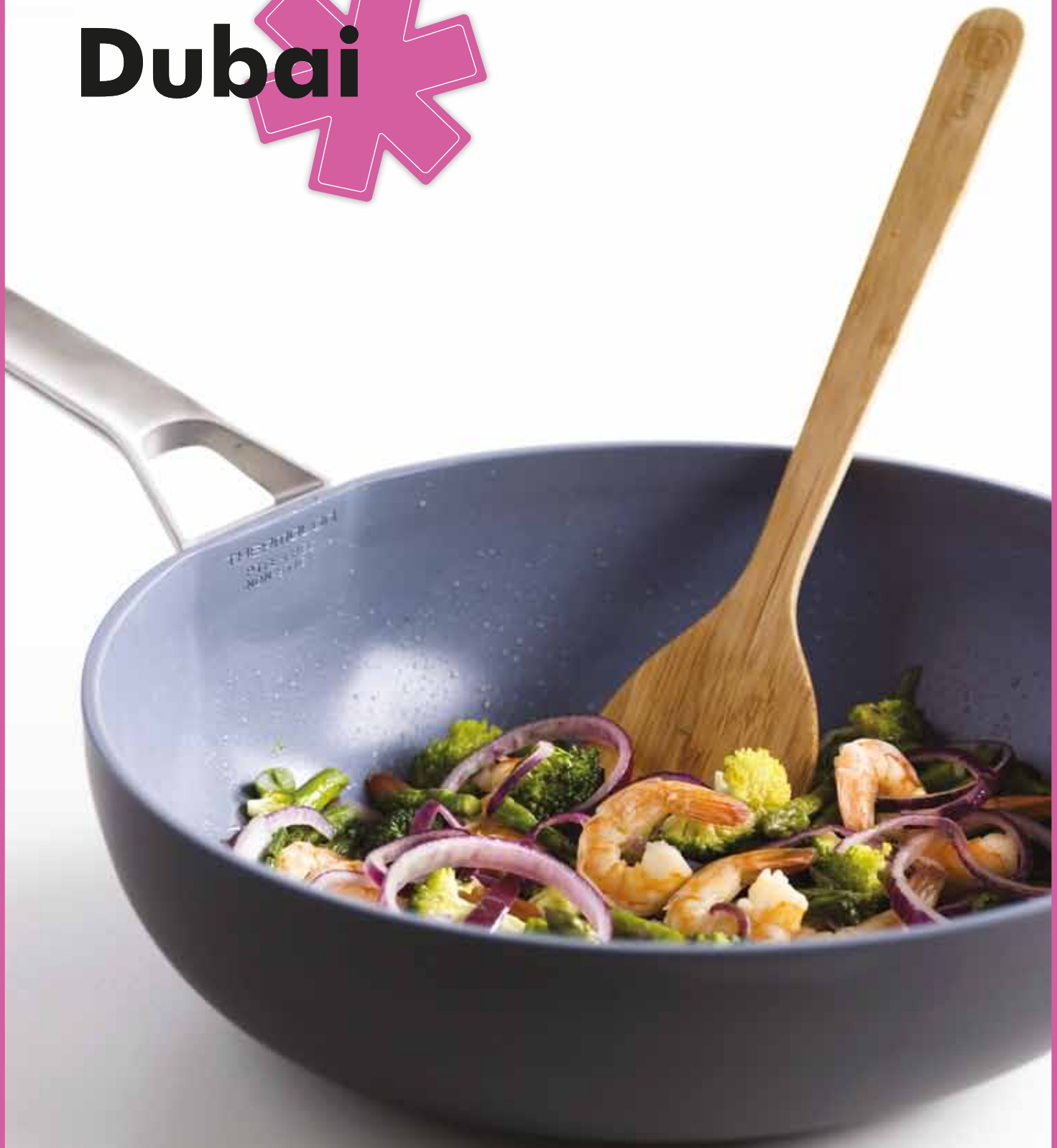
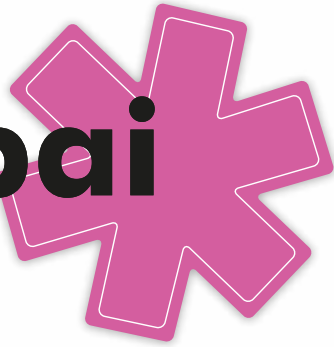


vw 01



vw 02

Dubai



Black aluminium induction



Please print on 100% recycled paper

innovative technology

Dubai*

black aluminium
induction

Can be used on following stoves

Gas / Electric / Ceramic / Halogen / Induction

THE BODY

<i>Material</i>	Aluminium 3003 - 5 mm
<i>Shape</i>	Forged GreenPan™ shape
<i>Base</i>	Impact bonded extra thick forged base
	Stainless steel 430 protector
<i>Coating interior</i>	Thermolon™ Rocks
<i>Coating exterior</i>	Thermolon™ black

THE HANDLES

<i>Long handle</i>	Cast stainless steel
<i>Side handle</i>	Cast stainless steel
<i>Lid handle</i>	Cast stainless steel
<i>Assembly</i>	Screwed side and long handle
	Spotwelded lid handle
<i>Finish</i>	Satin finish combined with glass-pearl finish

THE LID

<i>Material</i>	Casseroles and saucepans: Flat stainless steel 1 mm
	Skillets and woks: Dome stainless steel 1 mm
<i>Finish</i>	Mirror

THE PACKAGING

<i>Individual</i>	GreenPan™ sleeve GreenPan™ box: Covered items and Open saucepans GreenPan™ care and use and GreenPan™ warranty card Brown master carton
<i>Master carton</i>	

POTS AND PANS AVAILABLE

<i>Open non-stick frypan</i>	Ø 20 cm/ Ø 24 cm/ Ø 28 cm
<i>Open or covered non-stick saucepan</i>	Ø 16 cm (2.0 L)/ Ø 18 cm (2.5 L)
<i>Covered non-stick casserole</i>	Ø 20 cm (4.0 L)
<i>Covered non-stick stockpot</i>	Ø 24 cm (7.5 L)
<i>Covered non-stick skillet with 2 side handles</i>	Ø 24 cm/ Ø 28 cm
<i>Open or covered non-stick wok</i>	Ø 30 cm
<i>Covered non-stick wok with helper handle</i>	Ø 32 cm

ACCESSORIES

<i>Stainless steel lid</i>	Ø 20 cm/ Ø 24 cm/ Ø 28 cm
----------------------------	---------------------------



label

*** Protocol 2009:**

Creating the opportunities for challenging and enhancing the potentials of the future for the oil and gas industry, global market and the planet's environment



vw 01



vw 02



Dubai



White aluminium induction



Please print on 100% recycled paper

innovative technology

Dubai*

white aluminium
induction

Can be used on following stoves

Gas / Electric / Ceramic / Halogen / Induction

THE BODY

Material Aluminium 3003 - 5 mm
Shape Forged GreenPan™ shape
Base Impact bonded extra thick forged base
Coating interior Stainless steel 430 protector
Coating exterior Thermolon™ Rocks
 Thermolon™ white

THE HANDLES

Long handle Cast stainless steel
Side handle Cast stainless steel
Lid handle Cast stainless steel
Assembly Screwed side and long handle
 Spotwelded lid handle
Finish Satin finish combined with glass-pearl finish

THE LID

Material Casseroles and saucepans:
 Flat stainless steel 1 mm
 Skillets and woks:
 Dome stainless steel 1 mm
Finish Mirror

THE PACKAGING

Individual GreenPan™ sleeve
 GreenPan™ box:
 Covered items and Open saucepans
 GreenPan™ care and use and
 GreenPan™ warranty card
 Brown master carton
Master carton

POTS AND PANS AVAILABLE

Open non-stick frypan Ø 20 cm/ Ø 24 cm/ Ø 28 cm
Open or covered non-stick saucepan Ø 16 cm (2.0 L)/ Ø 18 cm (2.5 L)
Covered non-stick casserole Ø 20 cm (4.0 L)
Covered non-stick stockpot Ø 24 cm (7.5 L)
Covered non-stick skillet with 2 side handles Ø 24 cm/ Ø 28 cm
Open or covered non-stick wok Ø 30 cm
Covered non-stick wok with helper handle Ø 32 cm

ACCESSORIES

Stainless steel lid Ø 20 cm/ Ø 24 cm/ Ø 28 cm



label

*** Protocol 2009:**

Creating the opportunities for challenging and enhancing the potentials of the future for the oil and gas industry, global market and the planet's environment



vw 01



vw 02



Stockholm



Multilayer stainless steel induction



Please print on 100% recycled paper

innovative technology

Stockholm*

multilayer stainless steel
induction

Can be used on following stoves

Gas / Electric / Ceramic / Halogen / Induction

THE BODY

Material	Stainless steel 3 ply - 3 mm
Finish	Satin
Shape	Straight with cut neck Slanted frypans cut neck
Base	Induction suitable
Coating interior	Thermolon™ Resilience ²

THE HANDLES

Long handle	Cast hollow stainless steel
Side handle	Cast hollow stainless steel
Lid handle	Cast hollow stainless steel
Assembly	Riveted
Finish	Satin

THE LID

Material	Stainless steel 0.8 mm
Finish	Satin

THE PACKAGING

Individual	GreenPan™ blister, front card & sleeve GreenPan™ box: Covered items and open saucepans GreenPan™ care and use and GreenPan™ warranty card
Master carton	Brown master carton

POTS AND PANS AVAILABLE

Open non-stick frypan	Ø 20 cm/ Ø 24 cm/ Ø 28 cm
Open non-stick saucepan	Ø 14 cm (1.0 L)
Open or covered non-stick saucepan	Ø 16 cm (1.5 L)/ Ø 18 cm (2.0 L) Ø 20 cm (3.0 L)
Covered non-stick casserole	Ø 16 cm (1.5 L)/ Ø 18 cm (2.0 L) Ø 20 cm (3.0 L)/ Ø 24 cm (5.0 L)
Open or covered non-stick skillet	Ø 24 cm
Open & covered non-stick wok with long handle	Ø 30 cm



* Protocol 1972:

Identification and control of pollution

label



vw 01



vw 02



Stockholm



Hard anodized induction



Please print on 100% recycled paper

innovative technology

Stockholm*

hard anodized
induction

Can be used on following stoves

Gas / Electric / Ceramic / Halogen / Induction

THE BODY

Material
Shape

Aluminium 3003 - Variable in walls
Straight step base with cut neck
Forged frypans cut neck

Base

Impact bonded extra thick forged base
Stainless steel 430 protector
Thermolon™ Rocks

Coating interior

THE HANDLES

Long handle
Side handle
Lid handle
Assembly
Finish

Cast hollow stainless steel
Cast hollow stainless steel
Cast hollow stainless steel
Riveted
Satin

THE LID

Material
Finish

Stainless steel 0.8 mm
Satin

THE PACKAGING

Individual

GreenPan™ blister, front card & sleeve
GreenPan™ box:
Covered items and open saucepans
GreenPan™ care and use and
GreenPan™ warranty card
Brown master carton

Master carton

POTS AND PANS AVAILABLE

Open non-stick frypan

Ø 20 cm/ Ø 24 cm/ Ø 26 cm
Ø 28 cm/ Ø 32 cm

Open non-stick saucepan with 2 spouts
Open or covered non-stick saucepan

Ø 14 cm (1.0 L)
Ø 16 cm (1.5 L)/ Ø 18 cm (2.0 L)
Ø 20 cm (3.0 L)

Covered non-stick casserole

Ø 16 cm (1.5 L)/ Ø 18 cm (2.0 L)
Ø 20 cm (3.0 L)/ Ø 24 cm (5.0 L)
Ø 24 cm (7.5 L)

Covered non-stick stockpot

Open or covered non-stick skillet

Ø 24 cm/ Ø 26 cm/ Ø 28 cm

Open or covered non-stick wok

Ø 30 cm

Covered non-stick wok with helper handle

Ø 30 cm

Covered non-stick wok with helper handle
and high dome stainless steel lid

Ø 32 cm

Open non-stick oval fish pan

33 x 23 cm

Open non-stick pancake pan

Ø 28 cm

Open non-stick rectangular egg pan

14 x 18 cm

Open non-stick conical saucepan

Ø 20 cm

* Protocol
1972:

Identification and control of pollution



label



vw 01



vw 02



Stockholm



Black aluminium induction



Please print on 100% recycled paper

innovative technology

Stockholm*

black aluminium
induction

Can be used on following stoves

Gas / Electric / Ceramic / Halogen / Induction

THE BODY

Material
Shape

Aluminium 3003 - Variable in walls
Straight step base with cut neck
Forged frypans cut neck
Impact bonded extra thick forged base
Stainless steel 430 protector
Thermolon™ Rocks
Thermolon™ black

Base

Coating interior
Coating exterior

THE HANDLES

Long handle
Side handle
Lid handle
Assembly
Finish

Cast hollow stainless steel
Cast hollow stainless steel
Cast hollow stainless steel
Riveted
Mirror

THE LID

Material
Finish

Stainless steel 0.8 mm
Mirror

THE PACKAGING

Individual

GreenPan™ blister, front card & sleeve
GreenPan™ box:
Covered items and open saucepans
GreenPan™ care and use and
GreenPan™ warranty card
Brown master carton

Master carton

POTS AND PANS AVAILABLE

Open non-stick frypan

Ø 20 cm/ Ø 24 cm/ Ø 26 cm
Ø 28 cm/ Ø 32 cm

Open non-stick saucepan with 2 spouts
Open or covered non-stick saucepan

Ø 14 cm (1.0 L)
Ø 16 cm (1.5 L)/ Ø 18 cm (2.0 L)
Ø 20 cm (3.0 L)

Open non-stick conical saucepan
Covered non-stick casserole

Ø 20 cm (2.0 L)
Ø 16 cm (1.5 L)/ Ø 18 cm (2.0 L)
Ø 20 cm (3.0 L)/ Ø 24 cm (5.0 L)

Open or covered non-stick skillet
Open or covered non-stick wok
Covered non-stick wok with helper handle
and high dome stainless steel lid

Ø 24 cm/ Ø 26 cm/ Ø 28 cm
Ø 30 cm
Ø 32 cm

Open non-stick pancake pan

Ø 24 cm/ Ø 28 cm

Open non-stick oval fish pan

33 x 23 cm

Open non-stick stockpot

Ø 24 cm



* Protocol
1972:

Identification and control of pollution



VW 01



VW 02



London



Black aluminium



Please print on 100% recycled paper

innovative technology

London*

black aluminium

Can be used on following stoves
Gas / Electric / Ceramic / Halogen

THE BODY

Material Aluminium 3003 - 3.5 mm
Frypans:
Aluminium 3003 - Variable in walls
Belly cut neck
Forged frypans cut neck
Extra thick single base
Thermolon™ Rocks
Thermolon™ black

Shape

Base
Coating interior
Coating exterior

THE HANDLES

Long handle Cast stainless steel
Side handle Cast stainless steel
Lid handle Cast stainless steel
Assembly Riveted (spotwelded lid handle)
Finish Mirror

THE LID

Material Stainless steel 0.6 mm
Finish Mirror

THE PACKAGING

Individual GreenPan™ blister, front card & sleeve
GreenPan™ box:
Covered items and open saucepans
GreenPan™ care and use and
GreenPan™ warranty card
Brown master carton

Master carton

POTS AND PANS AVAILABLE

Open non-stick frypan Ø 20 cm/ Ø 24 cm/ Ø 28 cm
Open non-stick saucepan with 2 spouts Ø 14 cm (1.0 L)
Open or covered non-stick saucepan Ø 16 cm (2.0 L)/ Ø 18 cm (3.0 L)
Ø 20 cm (4.0 L)
Covered non-stick casserole Ø 16 cm (2.0 L)/ Ø 18 cm (3.0 L)
Ø 20 cm (4.0 L)/ Ø 24 cm (6.0 L)
Covered non-stick stockpot Ø 24 cm (7.5 L)
Open or covered non-stick skillet Ø 24 cm
Open or covered non-stick wok with helper handle Ø 30 cm
Open non-stick pancake pan Ø 26 cm
Covered non-stick chicken fryer Ø 30 cm
Open non-stick chef's pan Ø 20 cm
Open non-stick square grill 27 x 27 cm
Open non-stick square griddle 27 x 27 cm



* **Protocol 2005:**
Use new technology to reduce global warming

label



vw 01



vw 02



London



White aluminium



Please print on 100% recycled paper

innovative technology

London*

white aluminium

Can be used on following stoves
Gas / Electric / Ceramic / Halogen

THE BODY

Material Aluminium 3003 - 3.5 mm
Frypans:
Aluminium 3003 - Variable in walls
Belly cut neck
Forged frypans cut neck
Extra thick single base
Thermolon™ Rocks
Thermolon™ white

Shape

Base
Coating interior
Coating exterior

THE HANDLES

Long handle Cast stainless steel
Side handle Cast stainless steel
Lid handle Cast stainless steel
Assembly Riveted (spotwelded lid handle)
Finish Satin

THE LID

Material Stainless steel 0.6 mm
Finish Satin

THE PACKAGING

Individual GreenPan™ blister, front card & sleeve
GreenPan™ box:
Covered items and open saucepans
GreenPan™ care and use and
GreenPan™ warranty card
Brown master carton

Master carton

POTS AND PANS AVAILABLE

Open non-stick frypan Ø 20 cm/ Ø 24 cm/ Ø 28 cm
Open non-stick saucepan with 2 spouts Ø 14 cm (1.0 L)
Open or covered non-stick saucepan Ø 16 cm (2.0 L)/ Ø 18 cm (3.0 L)
Ø 20 cm (4.0 L)
Covered non-stick casserole Ø 16 cm (2.0 L)/ Ø 18 cm (3.0 L)
Ø 20 cm (4.0 L)/ Ø 24 cm (6.0 L)
Covered non-stick stockpot Ø 24 cm (7.5 L)
Open or covered non-stick skillet Ø 24 cm
Open or covered non-stick wok with helper handle Ø 30 cm
Open non-stick pancake pan Ø 26 cm
Covered non-stick chicken fryer Ø 30 cm
Open non-stick chef's pan Ø 20 cm
Open non-stick square grill 27 x 27 cm
Open non-stick square griddle 27 x 27 cm



* **Protocol 2005:**
Use new technology to reduce global warming

label



vw 01



vw 02



Kyoto



Black aluminium induction



Please print on 100% recycled paper

innovative technology

Kyoto*

black aluminium
induction

Can be used on following stoves

Gas / Electric / Ceramic / Halogen / Induction

THE BODY

Material
Shape

Aluminium 3003 - Variable in walls
Straight step base with cut neck
Forged frypans cut neck
Impact bonded extra thick forged base
Stainless steel 430 protector
Thermolon™ Rocks
Thermolon™ black

Base

Coating interior
Coating exterior

THE HANDLES

Long handle
Side handle
Lid handle
Assembly

Soft touch bakelite
Soft touch bakelite
Soft touch bakelite
Screwed

THE LID

Material
Finish

Tempered glass
Mirror polish stainless steel rim

THE PACKAGING

Individual

GreenPan™ blister, front card & sleeve
GreenPan™ box:
Covered items and open saucepans
GreenPan™ care and use and
GreenPan™ warranty card
Brown master carton

Master carton

POTS AND PANS AVAILABLE

Open non-stick frypan

Ø 18 cm/ Ø 20 cm/ Ø 24 cm
Ø 26 cm/ Ø 28 cm

Open non-stick frypan with helper handle

Ø 32 cm

Open non-stick saucepan with 2 spouts

Ø 14 cm (1.0 L)

Open or covered non-stick saucepan

Ø 16 cm (1.5 L)/ Ø 18 cm (2.0 L)

Covered non-stick casserole

Ø 20 cm (3.0 L)

Ø 16 cm (1.5 L)/ Ø 18 cm (2.0 L)

Covered non-stick stockpot

Ø 20 cm (3.0 L)/ Ø 24 cm (5.0 L)

Open or covered non-stick skillet

Ø 24 cm (7.5 L)

Open or covered non-stick wok

Ø 24 cm/ Ø 26 cm/ Ø 28 cm

Open non-stick oval fish pan

Ø 30 cm

Covered non-stick frypan

33 x 23 cm

Covered non-stick wok with 2 side handles

Ø 20 cm/ Ø 24 cm/ Ø 28 cm

Ø 32 cm

* Protocol 1997:

Reduction of CO₂



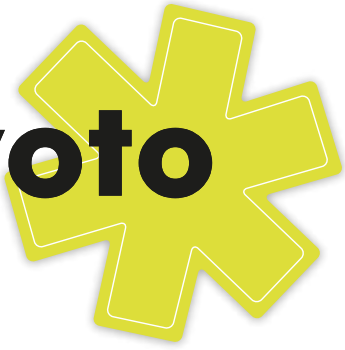
VW 01



VW 02



Kyoto



White aluminium induction



Please print on 100% recycled paper

innovative technology

Kyoto*

white aluminium
induction

Can be used on following stoves

Gas / Electric / Ceramic / Halogen / Induction

THE BODY

Material
Shape

Base

Coating interior
Coating exterior

Aluminium 3003 - Variable in walls
Straight step base with cut neck
Forged frypans cut neck
Impact bonded extra thick forged base
Stainless steel 430 protector
Thermolon™ Rocks
Thermolon™ white

THE HANDLES

Long handle
Side handle
Assembly

Soft touch bakelite
Soft touch bakelite
Screwed

THE PACKAGING

Individual
Master carton

GreenPan™ sleeve
Brown master carton

POTS AND PANS AVAILABLE

Open non-stick frypan

Open non-stick frypan with helper handle
Open non-stick skillet
Open non-stick conical saucepan

Ø 18 cm/ Ø 20 cm/ Ø 24 cm
Ø 26 cm/ Ø 28 cm
Ø 32 cm
Ø 24 cm/ Ø 26 cm/ Ø 28 cm
Ø 20 cm

* Protocol 1997:

Reduction of CO₂



vw 01



vw 02



Kyoto



Black aluminium



Please print on 100% recycled paper

innovative technology

Kyoto*

black aluminium

Can be used on following stoves
Gas / Electric / Ceramic / Halogen

THE BODY

Material
Shape

Base
Coating interior
Coating exterior

THE HANDLES

Long handle
Side handle
Lid handle
Assembly

THE LID

Material
Finish

THE PACKAGING

Individual

Master carton

POTS AND PANS AVAILABLE

Open non-stick frypan

Open non-stick frypan with helper handle
Open non-stick saucepan with 2 spouts
Open or covered non-stick saucepan

Covered non-stick casserole

Covered non-stick stockpot
Open or covered non-stick skillet
Covered non-stick skillet with 2 side handles
Open non-stick wok
Open or covered non-stick wok
Covered non-stick wok with helper handle
Covered non-stick wok with 2 side handles and high dome stainless steel lid

Open non-stick pancake pan
Open non-stick oval fish pan
Covered non-stick frypan
Open non-stick conical saucepan
Covered non-stick wok with 2 side handles

Aluminium 3003 - Variable in walls
Straight step base with cut neck
Forged frypans cut neck
Extra thick forged base
Thermolon™ Rocks
Thermolon™ black

Soft touch bakelite
Soft touch bakelite
Soft touch bakelite
Screwed

Tempered glass
Mirror polish stainless steel rim

GreenPan™ blister, front card & sleeve
GreenPan™ box:
Covered items and open saucepans
GreenPan™ care and use and
GreenPan™ warranty card
Brown master carton

Ø 18 cm/ Ø 20 cm/ Ø 24 cm
Ø 26 cm/ Ø 28 cm
Ø 32 cm
Ø 14 cm (1.0 L)
Ø 16 cm (1.5 L)/ Ø 18 cm (2.0 L)
Ø 20 cm (3.0 L)
Ø 16 cm (1.5 L)/ Ø 18 cm (2.0 L)
Ø 20 cm (3.0 L)/ Ø 24 cm (5.0 L)
Ø 24 cm (7.5 L)
Ø 24 cm/ Ø 26 cm/ Ø 28 cm
Ø 24 cm/ Ø 26 cm/ Ø 28 cm
Ø 24 cm
Ø 30 cm
Ø 32 cm
Ø 36 cm
Ø 24 cm/ Ø 28 cm
33 x 23 cm
Ø 20 cm/ Ø 24 cm
Ø 20 cm
Ø 32 cm

* Protocol 1997:

Reduction of CO₂



label



vw 01



vw 02



Helsinki



Black aluminium induction



Please print on 100% recycled paper

innovative technology

Helsinki*

black aluminium
induction

Can be used on following stoves
Gas / Electric / Ceramic / Halogen / Induction

THE BODY

Material Aluminium 3003 - Variable in walls
Shape Straight step base with cut neck
Forged frypans cut neck
Base Impact bonded extra thick forged base
Stainless steel 430 protector
Coating interior Thermolon™ Rocks
Coating exterior Thermolon™ Black

THE HANDLES

Long handle Bakelite with stainless steel insert
Side handle Bakelite
Lid handle Bakelite
Assembly Screwed

THE LID

Material Tempered glass
Finish Mirror polish stainless steel rim

THE PACKAGING

Individual GreenPan™ blister, front card & sleeve
GreenPan™ box:
Covered items and open saucepans
GreenPan™ care and use and
GreenPan™ warranty card
Brown master carton

Master carton

POTS AND PANS AVAILABLE

Open non stick frypan Ø 20 cm/ Ø 24 cm/ Ø 26 cm
Ø 28 cm/ Ø 32 cm (with helper handle)

Open non stick chef's pan Ø 20 cm
Open or covered non stick skillet Ø 28 cm
Open non stick wok Ø 30 cm



label

*** Protocol 1992:**

Convention on the Protection and Use of Transboundary Watercourses and International Lakes (ECE Water Convention)



vw 01



vw 02



Barcelona



Black aluminium induction



Please print on 100% recycled paper

innovative technology

Barcelona*

Black aluminium
induction

Can be used on following stoves

Gas / Electric / Ceramic / Halogen / Induction

THE BODY

Material
Shape

Base

Coating interior
Coating exterior

Aluminium 3003 - Variable in walls
Straight step base with cut neck
Forged frypans cut neck
Impact bonded extra thick forged base
Stainless steel 430 protector
Thermolon™ Rocks
Thermolon™ black

THE HANDLES

Long handle
Side handle
Lid handle
Assembly
Finish

Cast hollow stainless steel
Cast solid stainless steel
Cast solid stainless steel
Riveted
Mirror

THE LID

Material
Finish

Stainless steel 0.7 mm
Mirror

THE PACKAGING

Individual

Master carton

GreenPan™ blister, front card & sleeve
GreenPan™ box:
Covered items and open saucepans
GreenPan™ care and use and
GreenPan™ warranty card
Brown master carton

POTS AND PANS AVAILABLE

Open non-stick frypan
Covered non-stick casserole
Covered non-stick stockpot
Open non-stick chef's pan

Ø 20 cm/ Ø 24 cm/ Ø 28 cm
Ø 20 cm (3.0 L)/ Ø 24 cm (5.0 L)
Ø 24 cm (7.5 L)
Ø 20 cm



* Protocol 1976:

Convention for the Protection and Development of the Marine Environment and Coastal Region of the Mediterranean Sea Barcelona Convention

label



vw 01



vw 02



Barcelona



Multilayer stainless steel induction



Please print on 100% recycled paper

innovative technology

Barcelona*

multilayer stainless steel
induction

Can be used on following stoves

Gas / Electric / Ceramic / Halogen / Induction

THE BODY

Material Stainless steel multi-layer (3ply)
Shape Straight with cut neck
Slanted frypans cut neck
Induction suitable
Base Thermolon™ Rocks
Coating interior

THE HANDLES

Long handle Cast hollow stainless steel
Side handle Cast solid stainless steel
Lid handle Cast solid stainless steel
Assembly Riveted
Finish Mirror

THE LID

Material Stainless steel
Finish Mirror

THE PACKAGING

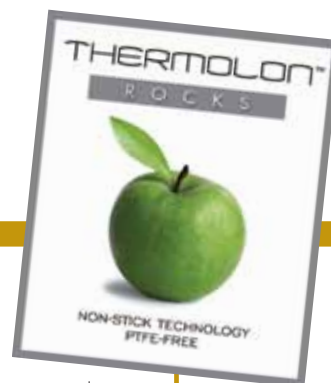
Individual Brown re-usable box with bellyband
GreenPan™ care and use and warranty card
Master carton Brown 5-ply box

POTS AND PANS AVAILABLE

Open non-stick frypan Ø 20 cm/ Ø 24 cm/ Ø 28 cm
Covered skillet with 2 sidehandles Ø 24 cm
Open non-stick wok with helper handle Ø 30 cm
Covered non-stick wok with 2 sides handles Ø 30 cm
Open non-stick round griddle Ø 30 cm
Covered fondue pot with fondue forks Ø 20 cm
Open frypan (uncoated) Ø 20 cm/ Ø 24 cm
Covered skillet with long handle (uncoated) Ø 24 cm (3.0 L)
Covered saucepan (uncoated) Ø 14 cm (1L)/Ø 18 cm (2L)
Covered casserole (uncoated) Ø 20 cm (3.0L)
Covered stockpot (uncoated) Ø 24 cm (7.6L)

* Protocol 1976:

Convention for the Protection and Development of the Marine Environment and Coastal Region of the Mediterranean Sea Barcelona Convention



label



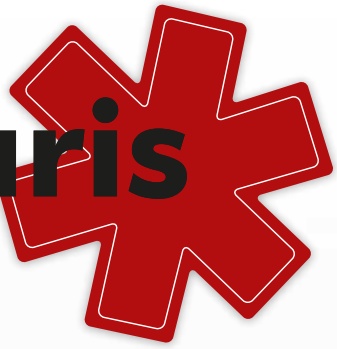
vw 01



vw 02



Paris



Hard anodized



Please print on 100% recycled paper

innovative technology

Paris*

hard anodized

Can be used on following stoves

Gas / Electric / Ceramic / Halogen

THE BODY

Material
Shape
Base
Coating interior

Aluminium 3003 - 4 mm
Straight with cut neck
Single base
Thermolon™ Endurance²

THE HANDLES

Long handle
Side handle
Lid handle
Assembly
Finish

Cast stainless steel
Cast stainless steel
Cast stainless steel
riveted
Satin

THE LID

Material
Finish

Stainless steel 0.7 mm
Satin

THE PACKAGING

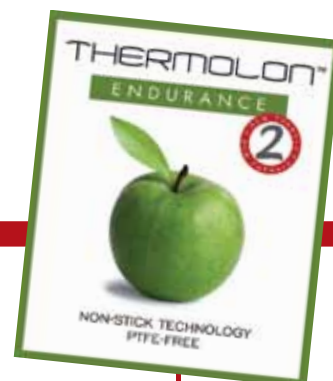
Individual

GreenPan™ sleeve
GreenPan™ box:
Covered items and Open saucepans
GreenPan™ care and use and
GreenPan™ warranty card
Brown master carton

Master carton

POTS AND PANS AVAILABLE

Open non-stick frypan	Ø 20 cm/ Ø 24 cm/ Ø 26 cm
Covered non-stick frypan with helper handle	Ø 30 cm
Open non-stick saucepan	Ø 20 cm (3.0 L)
Covered non-stick saucepan	Ø 14 cm (1.0 L)/ Ø 18 cm (2.0 L)
	Ø 20 cm (3.0 L)
Covered non-stick casserole	Ø 24 cm (5.0 L)
Covered non-stick stockpot	Ø 24 cm (7.5 L)
Open or covered non-stick skillet	Ø 24 cm
Covered non-stick skillet with helper handle	Ø 28 cm
Covered non-stick wok with long handle	Ø 32 cm
Open non-stick square grill	28 x 28 cm
Non-stick low square griddle	Ø 28 cm
Multi-cooker set: covered stockpot	Ø 24 cm
pasta insert	
steamer insert	



* Protocol 1992:

Convention for the Protection of the Marine Environment of the North-east Atlantic OSPAR Convention

label



vw 01



vw 02



New York



Stainless steel induction



Please print on 100% recycled paper

innovative technology

New York*

stainless steel
induction

Can be used on following stoves

Gas / Electric / Ceramic / Halogen / Induction

THE BODY

Material	Stainless steel Frypans: 0.6 mm Others: 0.7 mm
Finish	Satin
Shape	Straight with pouring rim folded edge Slanted frypans with pouring rim folded edge
Base	Impact bonded extra thick encap base
Coating interior	Stainless steel 430 protector Thermolon™ Resilience 2

THE HANDLES

Long handle	Tube stainless steel
Side handle	Wire stainless steel
Lid handle	Wire stainless steel
Assembly	Riveted
Finish	Satin

THE LID

Material	Tempered glass
Finish	Mirror polish stainless steel rim

THE PACKAGING

Individual	GreenPan™ sleeve GreenPan™ box: Covered items and Open saucepans GreenPan™ care and use and GreenPan™ warranty card
Master carton	Brown master carton

POTS AND PANS AVAILABLE

Open non-stick frypan	Ø 20 cm/ Ø 24 cm/ Ø 28 cm
Open or covered non-stick skillet	Ø 24 cm
Covered non-stick saucepan	Ø 14 cm (1.0 L)
Open or covered non-stick saucepan	Ø 16 cm (1.5 L)/ Ø 18 cm (2.0 L) Ø 20 cm (3.0 L)
Covered non-stick casserole	Ø 16 cm (1.5 L)/ Ø 18 cm (2.0 L) Ø 20 cm (3.0 L)/ Ø 24 cm (5.0 L) Ø 24 cm (7.5 L)
Covered non-stick stockpot	Ø 30 cm
Open or covered non-stick wok	Ø 20 cm/ Ø 24 cm/ Ø 28 cm
Covered non-stick frypan	



* Protocol 2006:

Environmental Protecting Agency asks to fade out use of PFOA by 2010 and vanish by 2015

label



vw 01



vw 02



New York



Hard anodized



Please print on 100% recycled paper

innovative technology

New York*

hard anodized

Can be used on following stoves

Gas / Electric / Ceramic / Halogen

THE BODY

Material
Shape

Aluminium 3003
Straight with cut neck
Slanted frypans cut neck
Single base
Thermolon™ Endurance 2

Base
Coating interior

THE HANDLES

Long handle
Side handle
Lid handle
Assembly
Finish

Tube stainless steel
Wire stainless steel
Wire stainless steel
Riveted
Satin

THE LID

Material
Finish

Tempered glass
Mirror polish stainless steel rim

THE PACKAGING

Individual

GreenPan™ blister, front card & sleeve
GreenPan™ box:
Covered items and open saucepans
GreenPan™ care and use and
GreenPan™ warranty card
Brown master carton

Master carton

POTS AND PANS AVAILABLE

Open non-stick frypan

Ø 20 cm/ Ø 24 cm/ Ø 26 cm
Ø 28 cm/ Ø 30 cm

Open non-stick saucepan with 2 spouts

Ø 14 cm (1.0 L)

Covered non-stick saucepan

Ø 14 cm (1.0 L)

Open or covered non-stick saucepan

Ø 16 cm (1.5 L)/ Ø 18 cm (2.0 L)

Covered non-stick casserole

Ø 20 cm (3.0 L)

Covered non-stick stockpot

Ø 16 cm (1.5 L)/ Ø 18 cm (2.0 L)

Open or covered non-stick skillet

Ø 20 cm (3.0 L)/ Ø 24 cm (5.0 L)

Covered non-stick skillet with 2 side handles

Ø 24 cm (7.5 L)

Open or covered non-stick wok

Ø 24 cm

Covered non-stick wok with helper handle

Ø 24 cm/ Ø 28 cm

Covered non-stick wok with 2 side handles

Ø 28 cm

Open non-stick round grill

Ø 32 cm

Open non-stick rectangular roaster with rack

Ø 24 cm/ Ø 36 cm

Covered non-stick frypan

Ø 24 cm/ Ø 28 cm

Open square grill pan

35 x 25.7 cm
Ø 20 cm/ Ø 26 cm/ Ø 28 cm
28 cm x 28 cm



label

* Protocol 2006:

Environmental Protecting Agency asks to fade out use of PFOA by 2010 and vanish by 2015



vw 01



vw 02



New York



Black aluminium



Please print on 100% recycled paper

innovative technology

New York*

black aluminium

Can be used on following stoves
Gas / Electric / Ceramic / Halogen

THE BODY

Material
Shape

Base
Coating interior
Coating exterior

Aluminium 3003
Straight with cut neck
Slanted frypans cut neck
Single base
Thermolon™ Endurance 2
Thermolon™ black

THE HANDLES

Long handle
Side handle
Lid handle
Assembly
Finish

Tube stainless steel
Wire stainless steel
Wire stainless steel
Riveted
Satin

THE LID

Material
Finish

Tempered glass
Mirror polish stainless steel rim

THE PACKAGING

Individual

GreenPan™ blister, front card & sleeve
GreenPan™ box:
Covered items and open saucepans
GreenPan™ care and use and
GreenPan™ warranty card
Brown master carton

Master carton

POTS AND PANS AVAILABLE

Open non-stick frypan
Ø 20 cm/ Ø 24 cm/ Ø 26 cm
Ø 28 cm/ Ø 30 cm

Open non-stick saucepan with 2 spouts
Ø 14 cm (1.0 L)

Covered non-stick saucepan
Ø 14 cm (1.0 L)

Open or covered non-stick saucepan
Ø 16 cm (1.5 L)/ Ø 18 cm (2.0 L)
Ø 20 cm (3.0 L)

Covered non-stick casserole
Ø 16 cm (1.5 L)/ Ø 18 cm (2.0 L)
Ø 20 cm (3.0 L)/ Ø 24 cm (5.0 L)
Ø 24 cm (7.5 L)

Covered non-stick stockpot
Ø 24 cm

Open or covered non-stick skillet
Ø 28 cm

Covered non-stick skillet with 2 side handles
Ø 28 cm

Open or covered non-stick wok
Ø 28 cm

Open non-stick round grill
Ø 24 cm/ Ø 28 cm

Open non-stick square grill
28 x 28 cm

Open non-stick rectangular roaster with rack
35 x 25.7 cm

Covered non-stick frypan
Ø 20 cm/ Ø 24 cm/ Ø 28 cm



* Protocol 2006:

Environmental Protecting Agency asks to fade out use of PFOA by 2010 and vanish by 2015

label



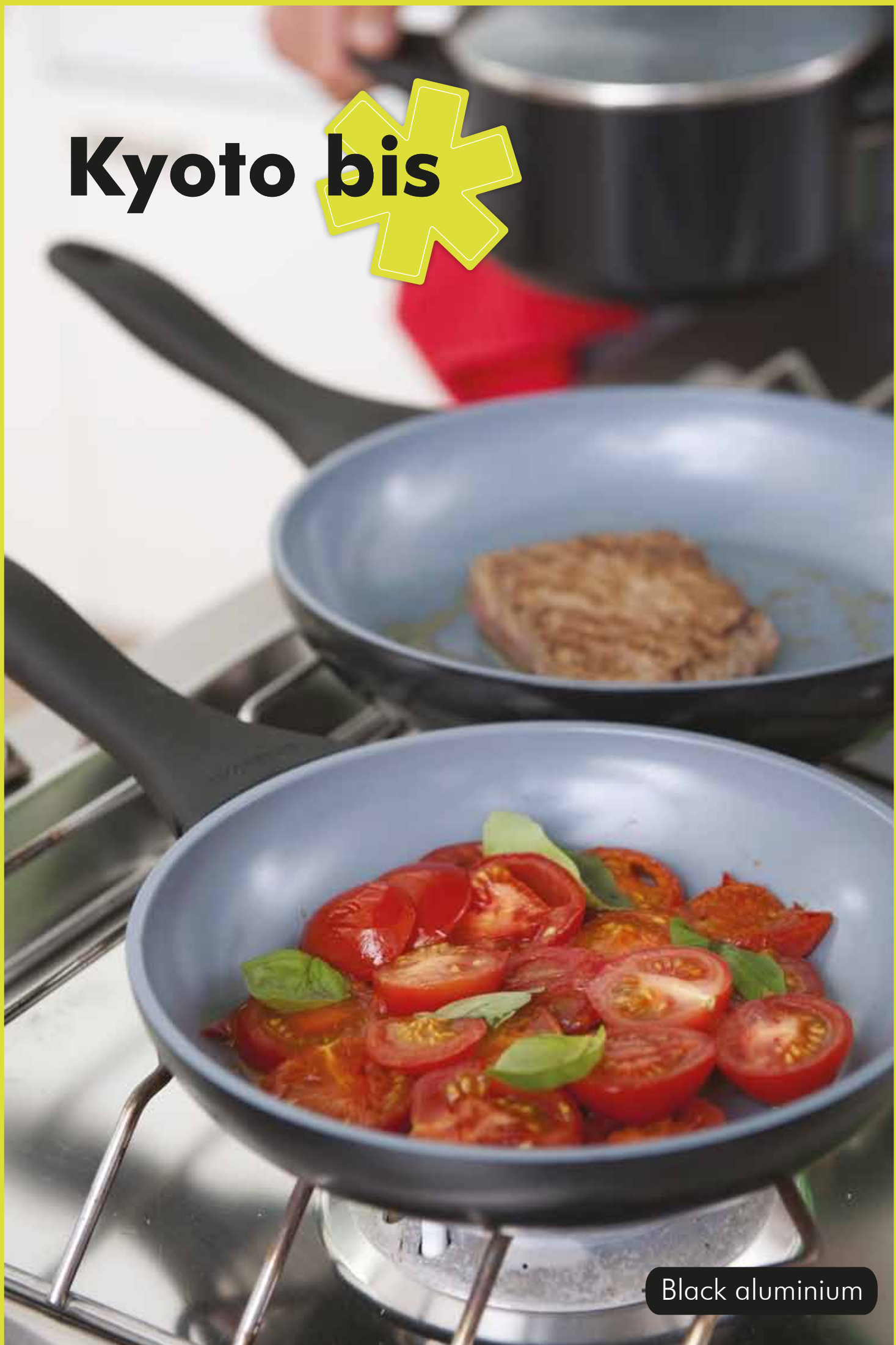
vw 01



vw 02



Kyoto bis



Black aluminium



Please print on 100% recycled paper

innovative technology

Kyoto Bis*

black aluminium

Can be used on following stoves
Gas / Electric / Ceramic / Halogen

THE BODY

Material Aluminium 3003 - 3 mm
Shape Straight with cut neck
Slanted frypans cut neck
Base Single base
Coating interior Thermolon™ Expert 2
Coating exterior Thermolon™ black

THE HANDLES

Long handle Bakelite
Side handle Bakelite
Lid handle Bakelite
Assembly Screwed

THE LID

Material Tempered glass
Finish Mirror polish stainless steel rim

THE PACKAGING

Individual GreenPan™ blister, front card & sleeve
GreenPan™ box:
Covered items and open saucepans
GreenPan™ care and use and
GreenPan™ warranty card
Brown master carton

Master carton

POTS AND PANS AVAILABLE

Open non-stick frypan Ø 20 cm/ Ø 24 cm/ Ø 28 cm
Open non-stick saucepan with 2 spouts Ø 14 cm (1.0 L)
Open or covered non-stick saucepan Ø 16 cm (1.5 L)/ Ø 18 cm (2.0 L)
Ø 20 cm (3.0 L)
Covered non-stick casserole Ø 16 cm (1.5 L)/ Ø 18 cm (2.0 L)
Ø 20 cm (3.0 L)/ Ø 24 cm (5.0 L)
Open or covered non-stick skillet Ø 24 cm/ Ø 28 cm
Open non-stick round grill Ø 24 cm/ Ø 28 cm
Covered non-stick saucepan Ø 14 cm (1.0 L)

* **Protocol 1997:**

Reduction of CO₂



label



vw 01



vw 02



Miami



Stainless steel induction



Please print on 100% recycled paper

innovative technology

Miami*

stainless steel
induction

Can be used on following stoves

Gas / Electric / Ceramic / Halogen / Induction

THE BODY

Material	Stainless steel - 0.6 mm
Finish	Mirror
Shape	Straight with pouring rim folded edge Slanted frypans with pouring rim folded edge
Base	Encap base Stainless steel 430 protector
Coating interior	Thermolon™ Resilience 2

THE HANDLES

Long handle	Tube stainless steel
Side handle	Tube stainless steel
Lid handle	Hollow stainless steel
Assembly	Riveted with stainless steel cap
Finish	Mirror

THE LID

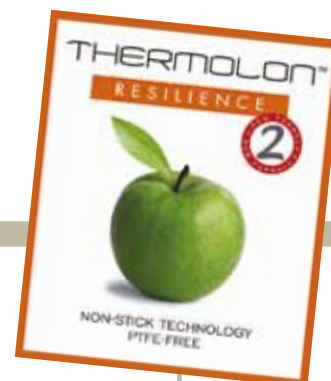
Material	Tempered glass
Finish	Mirror polish stainless steel rim

THE PACKAGING

Individual	GreenPan™ blister, front card & sleeve GreenPan™ box: Covered items and open saucepans GreenPan™ care and use and GreenPan™ warranty card
Master carton	Brown master carton

POTS AND PANS AVAILABLE

Open non-stick frypan	Ø 20 cm/ Ø 24 cm/ Ø 26 cm Ø 28 cm/ Ø 30 cm
Open non-stick round grill	Ø 30 cm
Open non-stick saucepan with 2 spouts	Ø 14 cm (1.0 L)
Covered non-stick saucepan	Ø 14 cm (1.0 L)
Open or covered non-stick saucepan	Ø 16 cm (1.5 L)/ Ø 18 cm (2.0 L) Ø 20 cm (3.0 L)
Covered non-stick casserole	Ø 16 cm (1.5 L)/ Ø 18 cm (2.0 L) Ø 20 cm (3.0 L)/ Ø 24 cm (5.0 L)
Covered non-stick stockpot	Ø 24 cm (7.5 L)/ Ø 26 cm (9.5 L) Ø 26 cm (11.0 L)
Open or covered non-stick skillet	Ø 24 cm
Open or covered non-stick wok	Ø 30 cm
Open non-stick fry pan with 2 side handles	Ø 32 cm
Open non-stick pancake pan	Ø 28 cm
Open non-stick risotto pan	Ø 20 cm
Covered non-stick skillet with 2 side handles	Ø 26 cm



* **Protocol 2006:**
17th Global Warming International
Conference & Exposition:
Extreme Ocean Events

label



vw 01



vw 02



Lima



Stainless steel induction



Please print on 100% recycled paper

innovative technology

Lima*

stainless steel
induction

Can be used on following stoves
Gas / Electric / Ceramic / Halogen / Induction

THE BODY

Material	Stainless steel - 0.6 mm
Finish	Mirror
Shape	Straight with pouring rim folded edge Slanted frypans with pouring rim folded edge
Base	Impact bonded extra thick encap base
Coating interior	Stainless steel 430 protector Thermolon™ Resilience2

THE HANDLES

Long handle	Hollow stainless steel
Side handle	Hollow tube stainless steel
Lid handle	Hollow tube stainless steel
Assembly	Riveted
Finish	Mirror

THE LID

Material	Tempered glass
Finish	Mirror polish stainless steel rim

THE PACKAGING

Individual	GreenPan™ blister, front card & sleeve GreenPan™ box: Covered items and open saucepans GreenPan™ care and use and GreenPan™ warranty card
Master carton	Brown master carton

POTS AND PANS AVAILABLE

Open non-stick frypan	Ø 20 cm/ Ø 24 cm/ Ø 26 cm Ø 28 cm/ Ø 30 cm
Covered non-stick saucepan	Ø 20 cm (3.0 L)
Covered non-stick casserole	Ø 24 cm (5.0 L)
Open non-stick wok	Ø 30 cm
Open non-stick round grill	Ø 30 cm
Open frypan with helper handle	Ø 32 cm
Open saucepan with spouts	Ø 14 cm
Covered chef's pan	Ø 20 cm



*** Protocol 1981:**

Convention for the Protection of the Marine Environment and Coastal Area of th South-east Pacific

label



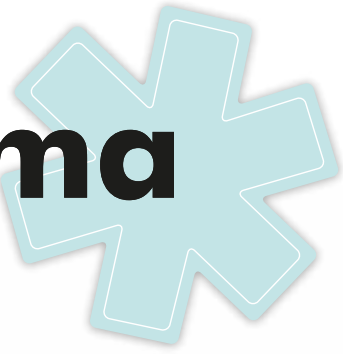
vw 01



vw 02



Lima



Hard anodized



Please print on 100% recycled paper

innovative technology

Lima*

hard anodized

Can be used on following stoves

Gas / Electric / Ceramic / Halogen

THE BODY

Material
Shape

Aluminium 3003 - variable in walls
Straight with cut neck
Slanted frypans cut neck
Single base
Thermolon™ Expert 2

Base
Coating interior

THE HANDLES

Long handle
Side handle
Lid handle
Assembly
Finish

Hollow stainless steel
Hollow tube stainless steel
Hollow tube stainless steel
Riveted
Satin

THE PACKAGING

Individual

GreenPan™ blister, front card & sleeve
GreenPan™ box:
Covered items and open saucepans
GreenPan™ care and use and
GreenPan™ warranty card
Brown master carton

Master carton

POTS AND PANS AVAILABLE

Open non-stick frypan
Open non-stick saucepan with 2 spouts
Open non-stick square grill
Covered non-stick saucepan

Ø 20 cm/ Ø 24 cm/ Ø 30 cm
Ø 14 cm (1.0 L)
28 x 28 cm
Ø 14 cm (1.0 L)/ Ø 18 cm (2.0 L)
Ø 20 cm (3.0 L)
Ø 24 cm (5.0 L)
Ø 30 cm
Ø 32 cm

Covered non-stick casserole
Covered non-stick frypan
Open non-stick wok with helper handle



*** Protocol 1981:**

Convention for the Protection of the Marine Environment and Coastal Area of th South-east Pacific

label



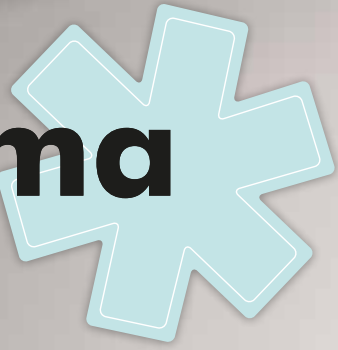
vw 01



vw 02



Lima



Black aluminium



Please print on 100% recycled paper

innovative technology

Lima*

black aluminium

Can be used on following stoves
Gas / Electric / Ceramic / Halogen

THE BODY

Material
 Shape
 Base
 Coating interior
 Coating exterior

Aluminium 3003 - Variable in walls
 Frypans: slanted shape with pouring rim
 Single base
 Thermolon™ Expert 2
 Thermolon™ Black

THE HANDLES

Long handle
 Assembly
 Finish

Hollow stainless steel
 Riveted
 Satin

THE PACKAGING

Individual

GreenPan™ blister, front card & sleeve
 GreenPan™ box:
 Covered items and open saucepans
 GreenPan™ care and use and
 GreenPan™ warranty card
 Brown master carton

Master carton

POTS AND PANS AVAILABLE

Open non-stick frypan

Ø 20 cm/ Ø 24 cm/ Ø 26 cm

Open non-stick square grill

Ø 28 cm/ Ø 30 cm

Open non-stick wok

Ø 30 cm



*** Protocol 1981:**

Convention for the Protection of the Marine Environment and Coastal Area of the South-east Pacific

label



vw 01



vw 02





Black aluminium



Please print on 100% recycled paper

innovative technology

Rio*



black aluminium

Can be used on following stoves
Gas / Electric / Ceramic / Halogen

THE BODY

Material
Shape

Base
Coating interior
Coating exterior

Aluminium 3003 - Variable in walls
 Conical shape with cut neck
 Frypans: Slanted shape with pouring rim
 Single base
 Thermolon™ Expert 2
 Thermolon™ Black

THE HANDLES

Long handle
Side handle
Lid handle
Assembly

Bakelite with green silicone insert
 Bakelite with green silicone insert
 Bakelite
 Screwed

THE LID

Material
Finish

Glass lid
 Mirror polished stainless steel rim

THE PACKAGING

Individual
Master carton

GreenPan™ sleeve
 Brown master carton

POTS AND PANS AVAILABLE

- Open non-stick frypan* Ø 20 cm/ Ø 24 cm/ Ø 26 cm
- Ø 28 cm/ Ø 30 cm
- Open non-stick saucepan with 2 spouts* Ø 14 cm (1.0 L)
- Open non-stick saucepan* Ø 16 cm (1.5 L)/ Ø 18 cm (2.0 L)
- Ø 20 cm (3.0 L)
- Covered non-stick casserole* Ø 20 cm (3.0 L)/ Ø 24 cm (5.0 L)
- Ø 28 cm (9.0 L)
- Covered or open non-stick wok* Ø 28 cm
- Open non-stick pancake pan* Ø 24 cm/ Ø 28 cm
- Covered non-stick skillet* Ø 24 cm
- Covered non-stick skillet with 2 side handles* Ø 24 cm
- Covered non-stick saucepan* Ø 14 cm (1.0 L)/ Ø 18 cm (2.0 L)
- Open non-stick wok* Ø 24 cm
- Open non-stick milkpan with 2 spouts* Ø 14 cm



*** Protocol 1992:**
 Reduction of toxic components during production

label



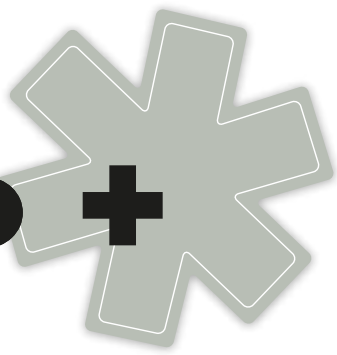
vw 01



vw 02



Rio +



Black aluminium



Please print on 100% recycled paper

innovative technology

Rio +*



black aluminium

Can be used on following stoves
Gas / Electric / Ceramic / Halogen

THE BODY

Material
 Shape
 Base
 Coating interior
 Coating exterior

Aluminium 3003
 Forged shape with cut neck
 Single step base
 Thermolon™ Rocks
 Thermolon™ Black

THE HANDLES

Long handle
 Assembly

Bakelite with green insert
 Screwed

THE PACKAGING

Individual

GreenPan™ full colour sleeve
 GreenPan™ care and use and warranty card on back of sleeve
 Brown 5-ply box

Master carton

POTS AND PANS AVAILABLE

Open non-stick frypan

Ø 20 cm/ Ø 24 cm/ Ø 26 cm
 Ø 28 cm/ Ø 30 cm



label

* **Protocol 1992:**
 Reduction of toxic components during production



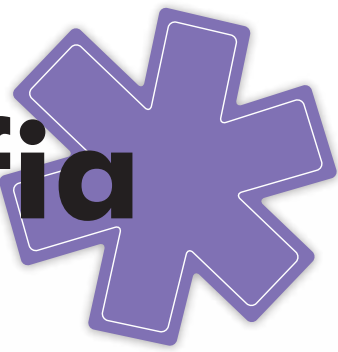
vw 01



vw 02



Sofia



Black aluminium induction



Please print on 100% recycled paper



innovative technology

Sofia*

black aluminium
induction

Can be used on following stoves

Gas / Electric / Ceramic / Halogen / Induction

THE BODY

<p>Material Shape Base</p> <p>Coating interior Coating exterior</p>	<p>Aluminium 3003 - Variable in walls Straight step base with cut neck Forged frypans cut neck Impact bonded extra thick forged base Stainless Steel 430 protectorbase Thermolon™ Endurance 2 Thermolon™ Black</p>
---------------------------------------------------------------------------------	--------------------------------------------------------------------------------------------------------------------------------------------------------------------------------------------------------------------------------------------

THE HANDLES

<p>Long handle Side handle Lid handle Assembly</p>	<p>Bakelite with grey insert Bakelite with grey insert Bakelite Screwed</p>
----------------------------------------------------------------	-----------------------------------------------------------------------------------------

THE LID

<p>Material Finish</p>	<p>Tempered glass Mirror polished stainless steel rim</p>
----------------------------	---------------------------------------------------------------

THE PACKAGING

<p>Individual</p> <p>Master carton</p>	<p>GreenPan™ full colour sleeve Covered items: shrinkwrap with sleeve GreenPan™ care and use and warranty card on back of sleeve Brown 5-ply box</p>
----------------------------------------	------------------------------------------------------------------------------------------------------------------------------------------------------------------

POTS AND PANS AVAILABLE

<p>Open non-stick frypan Covered non-stick skillet Open non-stick pancake pan Open non-stick saucepan with spouts Covered non-stick saucepan Covered non-stick casserole Open non-stick wok Covered non-stick wok Open non-stick rectangular egg pan</p>	<p>Ø 20 cm/ Ø 24 cm/ Ø 26 cm/ Ø 28 cm Ø 28 cm Ø 28 cm Ø 14 cm (1.0L) Ø 18 cm (2.0L) Ø 24 cm (5.0L) Ø 24 cm/ Ø 28 cm Ø 28 cm 18.3 cm x 14.1 cm</p>
------------------------------------------------------------------------------------------------------------------------------------------------------------------------------------------------------------------------------------------------------------------------------------------	-----------------------------------------------------------------------------------------------------------------------------------------------------------------------------------

*** Protocol 2012:**

Exhibition on energy efficiency and renewable energy, to promote best environmental practices.

label



vw 01



vw 02



Venice



Thermolon™ exterior induction



Please print on 100% recycled paper

innovative technology

Venice*

Thermolon™ exterior
induction

Can be used on following stoves

Gas / Electric / Ceramic / Halogen / Induction

THE BODY

Material Aluminium 3003 - Variable in walls
Shape Straight step base with cut neck
Forged frypans cut neck
Base Impact bonded extra thick forged base
Stainless Steel 430 protector
Coating interior Thermolon™ Rocks

THE HANDLES

Long handle Hollow stainless steel
Side handle Wire stainless steel
Lid handle Wire stainless steel
Assembly Riveted
Finish Mirror

THE LID

Material Tempered glass
Finish Mirror polished stainless steel rim

THE PACKAGING

Individual GreenPan™ blister, front & back sticker, kraft sleeve
GreenPan™ colour box:
Covered items and open saucepans
GreenPan™ care and use and warranty card
Master carton Brown 5-ply box

POTS AND PANS AVAILABLE

Open non-stick frypan Ø 20 cm/ Ø 24 cm/ Ø 28 cm
Covered non-stick skillet Ø 24 cm/ Ø 28 cm
Open non-stick saucepan Ø 14 cm (1.0L)
Covered non-stick saucepan Ø 16 cm (1.5L) / Ø 18 cm (2.0L) / Ø 20 cm (3.0L)
Open non-stick wok Ø 30 cm
Open non-stick chef's pan Ø 20 cm



* Protocol 2012:

Conference for natural and social sciences for estuaries, coasts and marine areas.

label



vw 01



vw 02



The Egg Expert



Green aluminum



Please print on 100% recycled paper

innovative technology

The Egg Expert

green aluminum

Can be used on following stoves

Gas / Electric / Ceramic / Halogen

THE BODY

Material
Shape
Base
Coating interior

Aluminum 3003 - 2.5 mm
Slanted frypan cut neck
Single base
Thermolon™ Rocks

THE HANDLES

Long handle
Assembly
Finish

Chrome-plated carbon steel wire
Riveted
Mirror polished

THE PACKAGING

Individual

GreenPan™ colour sleeve
GreenPan™ care and use and warranty card on back of sleeve
Brown 5-ply box

Master carton

POTS AND PANS AVAILABLE

Open non-stick frypan

Ø 12.5 cm



label



vw 01



vw 02



Why GreenPan™?

GreenPan™ is an international company with headquarters in Belgium.

GreenPan™ develops and manufactures qualitative household products based on 3 core principles.


HEALTH


ENVIRONMENT


CONVENIENCE



"If we don't show our children the road to sustainability, nothing will change. Don't expect that the next generation will clean up our mess, we have to start ourselves right here, right now."

GreenPan™ is on a mission to help support the global challenges of living in our modern society, by bringing **convenience** and **sustainability** to our products.

All over the world people have started to realize that global warming, pollution and the destruction of the environment are major issues for the 21st century.

Unfortunately, with some decisions we have to make we don't always have choices.

We, at GreenPan™ are committed to provide you with choices by offering you products that really will make a difference for your carbon footprint. You don't have to change the way you live. We have changed the way products are made.



Essentials collection

Essentials Groovy grill



Black aluminium



Please print on 100% recycled paper

innovative technology

Groovy Grill *

black aluminium

Can be used on following stoves
Gas / Electric / Ceramic / Halogen

THE BODY

Material
 Shape
 Base
 Coating interior
 Coating exterior

Aluminium 3003
 Conical shape with cut neck
 Round forged grillpan with cut neck
 Single base with grill-lines
 Thermolon™ Rocks
 Thermolon™ Black

THE HANDLES

Long handle
 Side handle
 Assembly
 Finished

Wire stainless steel
 Wire stainless steel
 Riveted
 Mirror

THE LID

Material

Powder coated carbon steel lid
 Available colors: Black and White

THE PACKAGING

Individual

GreenPan™ gift box
 GreenPan™ care and use and
 GreenPan™ warranty card
 Brown 5-ply box

POTS AND PANS AVAILABLE

Groovy grill set Black or White lid:
 Round grill pan
 Round grill wire rack
 High dome lid with steam control

Ø 28 cm



label



vw 01



vw 02



Essentials Hot Pot set



Black aluminium



Please print on 100% recycled paper

innovative technology

Hot Pot set*

black aluminium

Can be used on following stoves
Gas / Electric / Ceramic / Halogen

THE BODY

Material Aluminium 3003 - 3.5 mm
Shape Conical shape with pouring rim
Base Single base
Coating interior Thermolon™ Rocks
Coating exterior Thermolon™ Black

THE HANDLES

Side handle Wire stainless steel
Lid handle Wire stainless steel
Assembly Side handle: riveted
Lid handle: welded
Finish Mirror

THE LID

Material Double walled lid with spoon rest
Finish Mirror

THE PACKAGING

Individual GreenPan™ box
GreenPan™ care and use and
GreenPan™ warranty card
Brown master carton

POTS AND PANS AVAILABLE

Hot Pot set Ø 22 cm Black, White or Red:
Covered non-stick casserole Ø 22 cm
Melamine bowl Ø 24.8 cm
Double boiler insert* Ø 22 cm
Silicone spatula white 29 cm

Hot Pot set Ø 24 cm Black, White or Red:
Covered non-stick casserole Ø 24 cm
Melamine bowl Ø 26.8 cm
Steamer insert* Ø 24 cm
Bamboo spoon 30 cm
Bamboo fork 30 cm

*Sets can be sold without double boiler or steamer insert



label



vw 01



vw 02



Essentials Wonder Wok



Black aluminium induction



Please print on 100% recycled paper

innovative technology

Wonder Wok*

black aluminium
induction

Can be used on following stoves

Gas / Solid hob / Ceramic / Halogen / Induction

THE BODY

Material Aluminium 3003 - Variable in walls
Shape With cut neck
Base Impact bonded extra thick forged base
Coating interior Stainless steel 430 protector
Coating exterior Thermolon™ Rocks
 Thermolon™ Black

THE HANDLES

Long handle Hollow tube stainless steel
Lid handle Wire stainless steel
Assembly Long handle: riveted
 Lid handle: welded
Finish Mirror

THE LID

Material Powder coated carbon steel lid
 Available colors: Black and White

THE PACKAGING

Individual GreenPan™ box
 GreenPan™ care and use and
 GreenPan™ warranty card
 Brown master carton

POTS AND PANS AVAILABLE

Wonder Wok set Black or White lid:
 Open non-stick wok with foldable handle Ø 28 cm
 High dome lid with steam control
 Foldable tempura rack



label



vw 01



vw 02



Essentials

Twin Pan Set





Please print on 100% recycled paper

innovative technology

Twin Pan set*

black aluminium
white aluminium

Can be used on following stoves
Gas / Electric / Ceramic / Halogen

THE BODY

Material
Shape
Base
Coating interior
Coating exterior

Aluminium 3003 - 4 mm
Sloped body with pouring rim
Single base
Thermolon™ Rocks
Thermolon™ Black

THE HANDLES

Long handle
Side handle
Assembly
Finish

Hollow tube stainless steel
Wire stainless steel
Riveted
Mirror

THE PACKAGING

Individual

GreenPan™ box
GreenPan™ care and use and
GreenPan™ warranty card
Brown master carton

Master carton

POTS AND PANS AVAILABLE

Twin Pan set:
Open non-stick frypan
Open non-stick low frypan

Ø 25 cm
Ø 24 cm



label



vw 01



vw 02



Essentials



Tree Trivet





Please print on 100% recycled paper

innovative technology

Tree Trivet*

Material
Shape

Silicone
Heart, Oak or Maple leaf shape

THE PACKAGING

Individual
Master carton

GreenPan™ hang tag and polybag
Brown master carton

ITEMS AVAILABLE

Heart leaf Yellow or Black
Oak leaf Green or Blue
Maple leaf Red



VW 01



VW 02



Why GreenPan™?

GreenPan™ is an international company with headquarters in Belgium.

GreenPan™ develops and manufactures qualitative household products based on 3 core principles.


HEALTH


ENVIRONMENT


CONVENIENCE



"If we don't show our children the road to sustainability, nothing will change. Don't expect that the next generation will clean up our mess, we have to start ourselves right here, right now."

GreenPan™ is on a mission to help support the global challenges of living in our modern society, by bringing **convenience** and **sustainability** to our products.

All over the world people have started to realize that global warming, pollution and the destruction of the environment are major issues for the 21st century.

Unfortunately, with some decisions we have to make we don't always have choices.

We, at GreenPan™ are committed to provide you with choices by offering you products that really will make a difference for your carbon footprint. You don't have to change the way you live. We have changed the way products are made.

The Original
GREEN PAN™



Ovenware

Dubai Ovenware



Aluminized steel



Please print on 100% recycled paper



label

Dubai*

Ovenware

THE BODY

Material	Aluminium steel - 1 mm
Base	Single base
Coating interior	Thermolon™ Rocks
Coating exterior	Thermolon™ dark grey

ITEMS AVAILABLE

Rectangular items:

Deep rectangular oven pan	28 x 22 x 7.5 cm
Rectangular oven pan	28 x 7.5 x 7.5 cm
Large rectangular oven pan	28 x 38 x 6 cm
Rectangular oven tray	28 x 38 x 2.5 cm
Rectangular broiler tray	28 x 38 x 2.5 cm

Round items:

Deep round oven pan	Ø 22 x 4.5 cm
Large deep round oven pan	Ø 26 x 3.6 cm
Large round oven pan	Ø 30 x 2.5 cm
Round oven tray	Ø 35 x 1.6 cm



vw 01



vw 02



Why GreenPan™?

GreenPan™ is an international company with headquarters in Belgium.

GreenPan™ develops and manufactures qualitative household products based on 3 core principles.


HEALTH


ENVIRONMENT


CONVENIENCE



"If we don't show our children the road to sustainability, nothing will change. Don't expect that the next generation will clean up our mess, we have to start ourselves right here, right now."

GreenPan™ is on a mission to help support the global challenges of living in our modern society, by bringing **convenience** and **sustainability** to our products.

All over the world people have started to realize that global warming, pollution and the destruction of the environment are major issues for the 21st century.

Unfortunately, with some decisions we have to make we don't always have choices.

We, at GreenPan™ are committed to provide you with choices by offering you products that really will make a difference for your carbon footprint. You don't have to change the way you live. We have changed the way products are made.

The Original
GREEN PAN™



Electrical appliances

Steak King Grill





Please print on 100% recycled paper

Steak King Grill*

Items

Top cover	Brushed SS with GP logo embossed
Grill plates	Cast Alu coated with Thermolon™ Volt with embedded heating elements
Control panel	push buttons with LED indicator lights
Menu functions	Low – Medium – High – Sear
Turning knob	Height Adjusting & Lock knob
Removable drip tray	Black plastic
Cleaning tool	Green silicone Take Care scraper
Fixed Plug	Different plugs possible

SPECIFICATIONS WESTERN & EASTERN EUROPE / UK / ASIA-PACIFIC

Volt ~ Frequency	220V ~ 50Hz
Power	2000W
Certification	CE / GS (RoHS /Reach/LFGB/EMC/ERP)

SPECIFICATIONS NORTH & SOUTH AMERICA / CANADA / JAPAN

Volt ~ Frequency	120V ~ 60Hz
Power	1800W
Certification	UL / C-UL

AVAILABLE ITEMS

- Black colored casing
- White colored casing
- Red colored casing

THE PACKAGING

Individual	GreenPan™ giftbox GreenPan™ care and use GreenPan™ product card Brown master carton
Master carton	



label



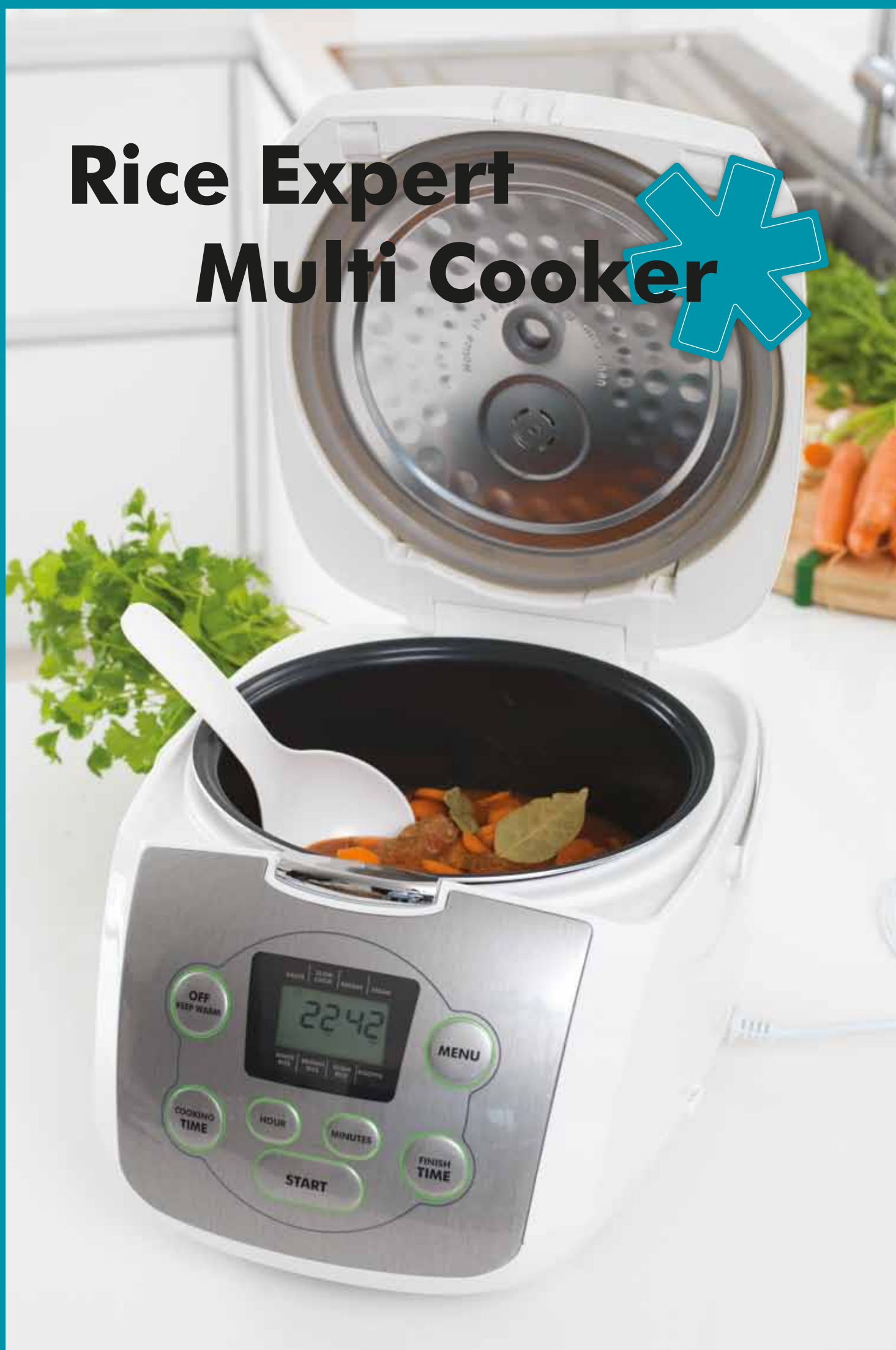
vw 01



vw 02



Rice Expert Multi Cooker





Please print on 100% recycled paper



label

Rice Expert Multi Cooker*

Items

Casing	Hard colored glossy plastic
Lid	Lid with steam valve and inner cover
Control Panel	Push buttons with LCD-display
Menu functions	sauté/slow cook/reheat/steam
Removable Plug	Finish Time / Keep Warm Different plugs possible

INNER POT

Material	2mm Alloy aluminium 3003
Inner coating	Thermolon™ Volt
Outer coating	Thermolon™ Volt

ACCESSORIES

Steamer tray	White plastic with silicone feet
Measuring cup	2000W
Ladle & Spatula	CE / GS (RoHS /Reach/LFGB/EMC/ERP)

SPECIFICATIONS WESTERN & EASTERN EUROPE / UK / ASIA-PACIFIC

Volt ~ Frequency	220V ~ 50Hz
Power	950W
Certification	CE / GS (RoHS /Reach/LFGB/EMC/ERP)

SPECIFICATIONS NORTH & SOUTH AMERICA / CANADA / JAPAN

Volt ~ Frequency	120V ~ 60Hz
Power	850W
Certification	UL / C-UL

AVAILABLE ITEMS

- Black colored casing
- White colored casing

THE PACKAGING

Individual	GreenPan™ giftbox GreenPan™ instruction manual
Master carton	Brown master carton



vw 01



vw 02



Induction Cooker





Please print on 100% recycled paper



label

Induction Cooker*

Items

Material	Black Crystallite ceramic glass
Body	Black plastic
Control Panel	Sensor Touch with LED indicator lights
Menu functions	Power settings, E-Check, Timer
Fixed Plug	Different plugs possible

SPECIFICATIONS WESTERN & EASTERN EUROPE / UK / ASIA-PACIFIC

Volt ~ Frequency	220V ~ 50Hz
Power	5 power levels: 300W, 600W, 1200W, 1500W, 1800W
Certification	CE / GS (RoHS /Reach/LFGB/EMC/ERP)

SPECIFICATIONS NORTH & SOUTH AMERICA / CANADA / JAPAN

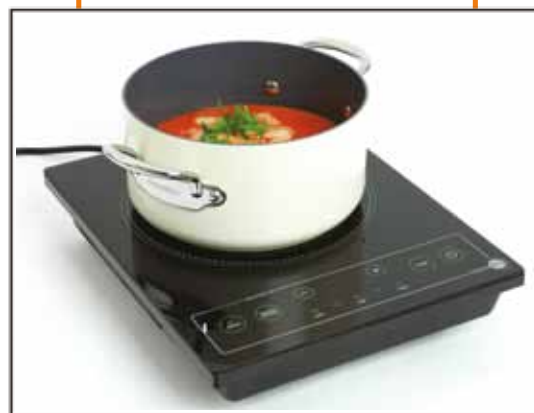
Volt ~ Frequency	120V ~ 60Hz
Power	5 power levels: 300W, 600W, 1200W, 1350W, 1500W
Certification	UL / C-UL

DIMENSIONS

29.3 cm x 35.6 cm
Height: 6.5 cm

THE PACKAGING

Individual	GreenPan™ giftbox GreenPan™ instruction manual
Master carton	Brown master carton



vw 01



vw 02



Why GreenPan™?

GreenPan™ is an international company with headquarters in Belgium.

GreenPan™ develops and manufactures qualitative household products based on 3 core principles.


HEALTH


ENVIRONMENT


CONVENIENCE



"If we don't show our children the road to sustainability, nothing will change. Don't expect that the next generation will clean up our mess, we have to start ourselves right here, right now."

GreenPan™ is on a mission to help support the global challenges of living in our modern society, by bringing **convenience** and **sustainability** to our products.

All over the world people have started to realize that global warming, pollution and the destruction of the environment are major issues for the 21st century.

Unfortunately, with some decisions we have to make we don't always have choices.

We, at GreenPan™ are committed to provide you with choices by offering you products that really will make a difference for your carbon footprint. You don't have to change the way you live. We have changed the way products are made.

The Original
GREEN PAN™



Accessories



Please print on 100% recycled paper

GreenPan™ Accessories

Bamboo Collection

Material

Spoon, turner and fork: bamboo
Spatula: bamboo with silicone

ITEMS AVAILABLE

Spoon
Turner
Fork
Spatula



Textiles

Material

Apron and oven glove: 100% high quality cotton
Sponge: 80% polyester 20% polyamide
Protective sheets: 100% polyester felt
Protective bags: 100% cotton

ITEMS AVAILABLE

Apron
Oven glove
Sponge
Protective sheet (3 sizes)

Protective bag (3 sizes)

27 x 27 cm
34 x 34 cm
40 x 40 cm
small
medium
large





Please print on 100% recycled paper

GreenPan™ Accessories

Inserts

Material Stainless steel
Finish Steamer insert: Satin

ITEMS AVAILABLE
Low steamer insert

Ø 24 cm/ Ø 28 cm/ Ø 30 cm



Lids

Material Glass
Handle Stainless steel or bakelite

ITEMS AVAILABLE

Glass with bakelite knob

Ø 14 cm/ Ø 16 cm/ Ø 18 cm/ Ø 20 cm/ Ø 24 cm
Ø 26 cm/ Ø 28 cm/ Ø 30 cm

Glass with stainless steel knob

Ø 14 cm/ Ø 16 cm/ Ø 18 cm/ Ø 20 cm/ Ø 24 cm
Ø 26 cm/ Ø 28 cm/ Ø 30 cm






Material Stainless steel wire
Handle Stainless steel wire

ITEMS AVAILABLE

Universal splatter lid





HEALTH 
ENVIRONMENT  
CONVENIENCE

www.green-pan.com



Ghent 2007 start of an exciting new company called **GreenPan™**